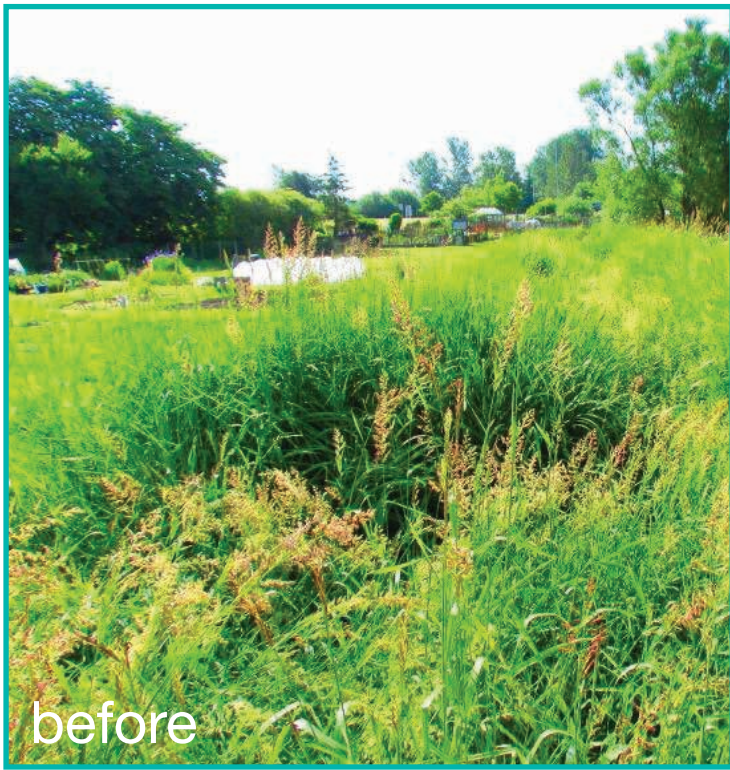


Swan Creek Restoration Within The Capital City Allotment Gardens - July 2015

Partnering with the Capital City Allotment Association (CCAA), the Friends of Swan Creek, Fisheries and Oceans Canada, the Pacific Salmon Foundation, and the Peninsula Streams Society, Saanich Parks and Saanich Storm and Wastewater implemented the planned restoration of a segment of Swan Creek from Highway 17 to the Kent Road pedestrian bridge. All of the work was located within the allotment gardens. The CCAA was involved in the planning and preliminary work of the project leading up to the in-stream portion.

Under technical guidance and onsite supervision from D.R Clough Consulting Ltd., a 215m stretch of Swan Creek was cleaned from heavy sediment loading due to years of flooding within the gardens. The creek channel profile was re-established to improve the habitat value of the creek as well as to improve storm water capacity. Several sediment detention ponds were installed within the creek bed to properly capture sediment and provide future access for routine sediment removal. The impacts of flooding also introduced large amounts of garden debris and invasive species into the creek that were removed during the project. During communications with the CCAA, an agreement was made to improve the garden maintenance habits of members to prevent future impacts to the creek. As part of the overall restoration of the creek, Saanich Parks is partnering with several volunteer groups to replant the riparian area with native species to improve erosion control and provide increased canopy cover for healthier fish habitat.



Swan Creek Restoration at Capital City Allotment Gardens Tree Appreciation Day Planting – November 8, 2015 10am-12pm

Saanich Parks will hold a Tree Appreciation Event on November 8th to plant approximately 750 native shrubs and trees along the top of bank of Swan Creek.

There will also be bark mulch delivered to the site to provide natural protection for the native planting along the creek. Please bring your family and friends to help get the plants and trees in the ground and spread the mulch throughout the restoration planting.

It will be a great chance to experience the gardens, connect with your neighbours and do something positive for the environment during this community based effort.

Tools, snacks, and training will be provided for all participants. We look forward to seeing you there.