



Streams & Peninsula Shorelines



To the PSS Community,

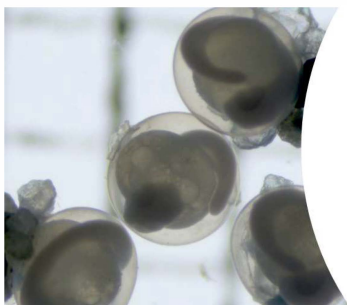
Whether you're a volunteer or a funder, a teacher or a business sponsor, a partner or a community member, you're receiving this email because you took action to help us out.

Even if you just gave us your email address at an outreach event, you joined a community dedicated to **protecting and enhancing our local watersheds, streams, and shorelines.**

In this newsletter, we're excited to feature recent events, upcoming projects, and ways for you to get involved.

Thanks for reading!

2025 Membership Renewals Open Now



FORAGE FISH FRENZY



Fall marks the beginning of our busy forage fish spawning season! In the coming months, we will see a peak in surf smelt and Pacific sand lance spawning on our beaches, and our volunteer surveyors are hard at work looking for eggs. **We're actively recruiting new volunteers this season**, including team leads, for all areas from Sidney to Sooke. If you're interested, be on the lookout for an email inviting you to a training event this winter. Note: Make sure you have filled out our [volunteer intake form](#), and have an [active PSS Membership](#).

October 25th marked the first-ever [Surf Smelt Day](#), a coast-wide initiative created by the [Coastal Forage Fish Network](#) to raise awareness about this vital forage fish species. Volunteer teams completed 7 surveys on or close to this day, 4 of which had positive results for surf-smelt eggs!

To learn more about surf smelt, [hear from our Executive Director Kyle Armstrong](#), who was recently on the air with [Al Ferraby \(CFAX 1070\)](#).



On October 26, we hosted [Trick or Trash](#): a Halloween-themed beach clean and citizen science event with [Ocean Wise](#) and [Early Career Ocean Professionals](#). We cleared garbage from the shore (with the Trash Pandas on their kayaks and paddleboards!), learned about microplastics, and completed a forage fish survey. Special thanks to our friends at [Pacifica Paddle](#), the [Trash Panda Ocean Brigade](#), and the [Gorge Waterway Action Society](#), for coming to this event.





COLQUITZ PIT TAG ARRAY



On September 3rd and 4th, volunteers joined PSS staff in installing a **PIT tag antenna array** into the bed of the Colquitz River. This array, comprised of electrical wiring encased in PVC piping, will detect **PIT (Passive Integrated Transponder) tagged salmon** as they swim overhead, recording their individual tag ID and the date and time. The data collected from this array will be crucial for furthering our understanding of the migration patterns, timings, and survivability of salmonids within the Colquitz watershed. Thank you to our partners and funders!



British Columbia
Salmon
Restoration and
Innovation Fund
(BC - SRIF)

Pacific
Forestry
Centre



RESTORATION UPDATES



Our restoration staff and volunteers have been busy, adding riffles and reinforcing eroded banks in Bowker Creek, planting native marsh plants in Portage Inlet (View Royal Park), Gabo Creek, and at MÁWUEĆ, and building riffles and enhancing salmon habitat and instream cover in KEL,SET Creek and Millstream Creek.

Learn more about our projects below, and follow along on [social media](#) to keep in the loop about upcoming projects and volunteer opportunities!

MÁWUEĆ Project Feature

Oak Bay News Article on Bowker Restoration

Chek News Feature on KEL,SET



Thank you to the teachers and principals who continue to bring us back to their schools every year, and for the new ones we've connected with. We reached over 500 students over the past 2 months! We brought [Shoreline Education](#) to Parkland Secondary, [Rain Garden Education](#) to Oak Bay High School and Mount Doug High School, and [Creatures of Habitat](#) to North Saanich Middle School and Spencer Middle School.

Speaking of which, Spencer Middle School's Creatures of Habitat event marks the first time this program has reached a school within the Sooke School District (62). We were thrilled to be joined by representatives from the school district, the City of Langford, and the Goldstream News Gazette, who captured some great photos of the event. Click below to view.

Photo by Ben Fenlon/Goldstream News Gazette

Creatures in the News!

Calling all teachers! Join the Q1 **RUSH** Rain Garden Challenge!

Your classes can help us by plotting 1000+ [rain gardens](#) across the South Island to map our green infrastructure. [Watch this video](#) to learn how to participate!





GET INVOLVED

There are many ways for you to support us. You can:

- **Volunteer with us!** If you've filled out your [volunteer intake form](#), you'll be receiving upcoming volunteer call-out emails. You'll hear about upcoming events like:
 - **Planting native plants with Tsartlip First Nation at MÁWUEĆ!** Happening weekly through the winter. The first planting event will occur on Nov. 13, from 9 am to 12 pm. If you are interested in volunteering, please email katrina.adams@peninsulastreams.ca
 - **Removing English Ivy in Dickson Woods** (part of the KEL,SET/Reay Creek watershed) on November 14th. Register to volunteer [here](#).
- **Become a Member/Renew your Membership!** 2025 PSS Memberships are now available and can be purchased [here](#) for \$10 (\$5 for students). Memberships are very important to PSS, as they demonstrate the depth of our community support to our funding partners.
- **Support us with a Donation!** There are many options for businesses and individuals to support our work, through tax-deductible charitable donations, sponsorships, and legacy fund contributions. Learn more [here](#).



Thanks again to all of our volunteers, partners, funders, teachers, students, parents, and other community supporters. We couldn't do any of this without you!

For more pictures, updates, and volunteer opportunities, follow us on social media!





Follow



Subscribe

Peninsula Streams and Shorelines

9860 West Saanich Road, North Saanich BC, V8L 4B2

Want to change how you receive these emails?

You can [unsubscribe from this list](#).