

PENINSULA STREAMS & SHORELINES

NEWSLETTER

SPRING 2025 ISSUE



LATEST UPDATES

- COLQUITZ RIVER SMOLT TRAP
- CUTTHROAT ACOUSTIC TAGGING
- BEACH PROGRAM UPDATES
- NYMPH POINT FEATURE
- EDUCATION HIGHLIGHTS
- STEWARDSHIP ACTIVITIES
- OUTREACH EVENTS
- AND SO MUCH MORE!

*Streams
&
Peninsula
Shorelines*

FROM THE EXECUTIVE DIRECTOR

Greetings to the PSS Community,

I'm proud to share this edition of our quarterly newsletter, highlighting just a few of our recent efforts in the streams and shorelines of Greater Victoria—along with a sneak peek at what's ahead! Since the winter break, our staff and volunteers have been hard at work across a wide range of projects—from fundraising and strategic planning to shoreline sampling and spring riparian planting—all in preparation for a busy and productive summer season. To help us achieve our goals, we're excited to welcome some new rockstars to the PSS team: Stephanie Gurney, who will be leading our education programming, and Allison Weber, who joins us as Environmental Technician. If you haven't had the pleasure yet, you can learn more by reading their bios on our website. We can't wait to see you out at your favourite stream or shoreline, helping us deliver another incredible year of environmental education, community stewardship, and ecological restoration.

Thank you for joining us!

Kyle Armstrong
Executive Director



COLQUITZ RESTORATION & MONITORING

SMOLT TRAP & PIT TAGGING

The Colquitz River smolt trap was installed for a second year of monitoring on April 2nd, and involved building a fence structure across the width of the river to direct outmigrating fish through a pipe and into a box. Staff and volunteers check the box every morning to identify, count, and measure fish. And we've seen some pretty cool things —coho, cutthroat trout, sculpin, and more!

We're also tagging a portion of the smolts with PIT (Passive Integrated Transponder) tags. These tiny internal microchips are activated when a tagged fish passes over a special antenna array embedded in the riverbed. This system helps us track migration timing and estimate the survival rates of local fish populations.



CUTTHROAT ACOUSTIC TAGGING

Our cutthroat trout acoustic tagging program has expanded to Sooke! The program focuses on sea-run coastal cutthroat trout (CCT) to better understand their movement patterns within Portage Inlet/Gorge Waterway, Esquimalt Harbour, and now the Sooke Basin. The program aims to determine the residency times of CCT in estuarine habitats and explore temporal movement patterns across different habitats. The program is in partnership with the T'Sou-ke First Nation and the [Coastal Cutthroat Coalition](#).



Acoustic receiver decodes signal and adds date/time stamp

Scan here for more information on our work in the Colquitz Watershed



Fisheries and Oceans Canada / Pêches et Océans Canada



BRITISH COLUMBIA
CONSERVATION FOUNDATION



BEACH PROGRAM

BEACH EDUCATION AND CONSERVATION OF HABITAT

FORAGE FISH UPDATES

Our community-run forage fish monitoring program continues to document surf smelt and Pacific sand lance spawning sites across the Saanich Peninsula and as far west as Jordan River.

On April 23rd, PSS co-hosted the Coastal Forage Fish Network (CFFN) Symposium and provided an update of our regional forage fish sampling efforts. The CFFN is a collection of environmental NGOs, community groups, and First Nations working to document forage fish presence to better understand their populations and habitat in the Salish Sea.

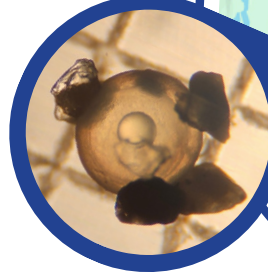
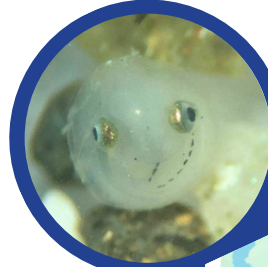
INVASIVE EUROPEAN GREEN CRABS

PSS has partnered with the DFO and several local organizations as part of a Rapid Response Plan to investigate the spread of European green crabs (EGC) throughout the Gorge Waterway. This collaboration involves the CRD, stewardship groups, and many volunteers.

EGC are an invasive species that wreck havoc on marine and estuarine environments as they compete with native organisms for food and habitat resources. In the process, they also destroy critical keystone ecosystems, such as eelgrass meadows.

For more information on how to identify EGC, visit the Invasive Species Council of BC website.

SURF SMELT EGG



PACIFIC SAND LANCE EGG



SO FAR IN 2025...

62
SURF SMELT
POSITIVES

&

8
SAND LANCE
POSITIVES



Scan here for more information on the BEACH Program and how to get involved as a volunteer



Fisheries and Oceans Canada / Pêches et Océans Canada



TD Friends of the Environment Foundation



NYMPH POINT PARK SHORELINE RESTORATION PROJECT

WHAT'S GOING ON?

North Saanich shorelines and Tsehum Harbour are a regional hotspot on the Pacific Coast of Canada for spawning species of forage fish. This area is also highly developed with its shoreline habitats, coastal infrastructure, and cultural resources exposed to the risk of climate change and sea level rise. Conservation and restoration of these important shoreline spawning habitats is critical for local populations of surf smelt.

Nymph Point was identified as a key area of interest for habitat restoration. PSS, Project Watershed, the District of North Saanich, and others are working towards a restoration plan for this important habitat that can also help promote awareness of shoreline spawning habitats.

PROPOSED WORK

Restoration work at this site aims to replicate the more suitable spawning conditions found along the southwest shoreline of the park, addressing the less favorable sediments and habitat currently present in the northeast section. This will be accomplished through invasive species removal, marine riparian planting, and beach nourishment.

For more details, see Peninsula Streams' presentation in the recent Coastal Forage Fish Network Symposium recording available on our website or attend our upcoming BEACH Program Review & Strategy Session at IOS on Monday, May 12th from 1:00–4:00pm.



Scan here to watch PSS' site presentation at the 2025 Coastal Forage Fish Network Symposium



EDUCATION PROGRAMS

STREAMSIDE EDUCATION

PSS is collaborating with DFO's Stream to Sea: Salmonid in the Classroom Program again this year to help deliver Streamside Education to grade schools across Greater Victoria. This program offers students an opportunity to release the salmon fry they've hatched in their classroom into select urban streams, providing a hands-on learning experience to explore the features of a healthy stream ecosystem.

In addition to releasing their fry into a local stream, students also complete an assessment of the current stream conditions to make predictions of whether their stream is a suitable habitat for juvenile salmon, and work together to identify aquatic invertebrates from within the stream channel. Aquatic bugs make up a large part of juvenile salmon diets and help indicate water quality. This activity helps highlight the interconnection of freshwater ecosystems and helps our "Bug Detectives" learn how to become stewards of their community streams.

SHORELINE EDUCATION

Through PSS' BEACH Program, our educators offer various activities within our Shoreline Education Program to help connect students to their local shorelines and promote hands-on learning through discovery. Some Shoreline Education activities include beach seining, forage fish egg surveys, and beach cleanups.

In early April, we were fortunate enough to have Mavis Underwood from Tsawout Nation join us at Agate Beach to share her knowledge of ̓EL̓,̓L̓Ć̓, a historical ̓SÁNEĆ̓ village site located on Cordova Bay.



Scan here for more information on our education programs and how to book your own session today!



VICTORIA FOUNDATION



STEWARDSHIP ACTIVITIES

WHAT'S NEW?

RESTORATION UPDATE:

Riparian restoration has been a big focus lately! Volunteers have had an active spring in the Bowker, KENNES, KEL,SET, TETAYUT, Millstream, and TENTEN watersheds pulling invasive species and planting suitable riparian plants.

COLQUITZ COALITION:

In April, the annual Colquitz Coalition meeting was held. This meeting brings together a diverse collection of stakeholder groups who care about the stewardship of the Colquitz Watershed. For more information, visit our website at www.colquitzcoalition.com.

WATER QUALITY MONITORING:

PSS staff, along with our numerous stewardship partner groups and volunteers, continue to collect water quality data within streams throughout Greater Victoria.

2025 RESTORATION EFFORT

- Volunteer events hosted = 13
- Volunteer attendance = 175
- Native plants planted = 2,104
- Invasive species removed = 1,850 m²

UPCOMING MÁWUEĆ EVENTS

- Monday, May 12 from 1:00 – 3:00pm
- Thursday, June 12 from 1:00 – 3:00pm
- Friday, June 20 from 1:00 – 3:00pm

To register for any of the MÁWUEĆ events, please email Marleah at: stewardshipadmin@tsartlip.com.



Scan here to learn about our stewardship programs and how to get involved in your local watershed!



COMMUNITY OUTREACH

EARTH DAY CELEBRATIONS

PSS staff and volunteers were celebrating Earth Day across Greater Victoria this year!

- We hosted a beach cleanup with Oak Bay Marine Group at Nymph Point, removing 120 kg of debris.
- We hosted a volunteer planting and ivy removal event at our KEL,SET Creek restoration site.
- We supported Friends of Bowker Creek in planting a rain garden with students from Oak Bay High School.
- We attended an Earth Day Expo coordinated by students in the Belmont Environmental Education and Stewardship Club.

Join our volunteer mailing list to stay up to date on all of the great events going on in various communities throughout Greater Victoria..

PSS IN THE COMMUNITY

May 27th – Robinson's 'Thrift for a Cause' and PSS Film Night

June 1st to 8th – Ocean Week Victoria

June 29th – BC CrabFest at Ship Point

July 1st – Canada Day at Fort Rodd Hill

August 9th – Family Day at Heritage Acres

PSS MERCH AVAILABLE

Check out Robinson's Outdoor Store to get your hands on your own Peninsula Streams swag, including custom Anian x PSS collab hats, t-shirts, and stickers!



Scan here to join our volunteer network and get updates on new and upcoming events



MAKING WAVES!

PSS FUNDRAISING COMMITTEE HOSTS ONLINE AUCTION & SMOLT SOIRÉE

Our Fundraising Committee was busy this spring planning PSS' spring online auction and Smolt Soirée, an evening to celebrate the silent migration of juvenile salmon. These two fundraising campaigns helped us raise over \$25,000 in critical funds to support our restoration, stewardship, and education efforts. Thank you Finest At Sea, this year's corporate watershed warrior, for their generous support (and delicious seafood)!



MARY HAIG-BROWN WATERSHED WARRIOR AND LIFETIME ACHIEVEMENT AWARD

At the Smolt Soirée, we had the joy of celebrating Mary Haig-Brown for her incredible contributions to watershed stewardship. Mary's leadership, generosity, and hands-on care for the Tod Creek Watershed continue to inspire everyone around her. We are so grateful for the example she sets and the lasting difference she makes in our community.



CONSERVATION AWARD

Thanks to PSS' exceptional contributions to the conservation and restoration of key fishery resources and habitats on Southern Vancouver Island, we were named American Fisheries Society's Washington-Vancouver Chapter's Conservation Organization of the Year. This honour, nominated by the Freshwater Fisheries Society of BC, highlights our organizations restoration efforts in the KENNES watershed, in collaboration with Tsartlip First Nation and other partners.

Special thanks to West Wind Hardwood for donating the beautiful awards crafted from salvaged Garry Oak!

Scan here to donate
and support our
programs!



OUR LEGACY IS YOUR LEGACY

LEAVE A LEGACY OF IMPACT

Did you know that by including us in your estate plans, you can provide long-term financial support for our restoration, conservation, stewardship, and education programs?

The Peninsula Streams and Shorelines Fund has a number of options in our planned giving program including our Fund established in partnership with the Victoria Foundation, which hosts and independently manages it on our behalf.

Your donation will be pooled with others in our permanent endowment fund. Income from the fund will be distributed annually to us by the Victoria Foundation to support our various programs.

By giving even a small portion of your estate to our fund, you can leave a lasting legacy to your community and still support those you love.

You can make cash donations to the fund, bequests in your Will, or gifts of assets such as stocks and insurance. You may also be able to save on taxes.

Please contact us to learn more. Alternatively, consult your estate planning advisor, or visit the Victoria Foundation website for more details.



VICTORIA FOUNDATION

CONNECTING PEOPLE WHO CARE WITH CAUSES THAT MATTER®

Scan here for more
information on the
Victoria Foundation's
Giving Legacy Program



WORKING TOGETHER

Peninsula Streams and Shorelines is honoured to work within Coast and Straits Salish Territory, the territories of the Lekwungen peoples, known today as Songhees and Xwsepsum (Esquimalt) Nations, the W̱SÁNEĆ peoples, known today as W̱JOŁEŁP (Tsartlip), BÓKEĆEN (Pauquachin), STÁUTW̱ (Tsawout), W̱SIKEM (Tseycum), and MÁLEXEŁ (Malahat) Nations, and T'Sou-ke First Nation. We are deeply grateful for our partners and collaborators and look forward to our continued work, achieving our shared goals and strengthening our bonds as stewards of the environment.



TSARTLIP
FIRST NATION



Songhees



TSEYCU FIRST NATION



PAUQUACHIN
FIRST NATION

*Streams
Peninsula &
Shorelines*

FROM HEADWATERS TO DEEP WATERS
Building a legacy of healthy streams and shorelines
est. 2002

THANK YOU TO OUR MANY SPONSORS AND FUNDERS

FINEST AT SEA
QUALITY SEAFOOD
WEST COAST

DESTINATION GREATER
VICTORIA

WHALE & WILDLIFE WATCHING
EAGLE WING TOURS

RALMAX
GROUP OF COMPANIES

 **ROBINSON'S**
Outdoor Store


**PACIFIC SALMON
FOUNDATION**


**VICTORIA
FOUNDATION**

 **YYJ** VICTORIA
INTERNATIONAL
AIRPORT


Freshwater Fisheries
Society of BC

 **REAL ESTATE
Foundation
OF BC**

 **MILL BAY
MARINE
GROUP**

 **TIP/TOP**
TREE SERVICE LTD

**BOTTOM
DWELLERS**

 **BIG WHEEL
BURGER**

ANIAN
NATURALLY TECHNICAL - VANCOUVER ISLAND

**PRINCE
of
WHALES**
Whale Watching

**Sherwood
Marine Centre**

 **Satinflower
NURSERIES**
native plants, seeds & consulting

TROTAC
RECREATIONAL-COMMERCIAL-INDUSTRIAL
MARINE


**OAK BAY
MARINE GROUP**

Custom

Rodbuilders Inc.

 **Friends of the
Environment
Foundation**


**ROY
GROUP**

 **Saanich**


**Central
Saanich**

 **north
saanich**

Langford
where it all happens.

 **Sidney**

DISTRICT OF
OAK BAY

*This is not a comprehensive list of sponsors. If we missed you and you'd like to be included, please let us know.

*Streams
&
Peninsula
Shorelines*

Scan here to join our community





*Streams
&
Peninsula
Shorelines*

**Scan here to become a member
and join our community**

