

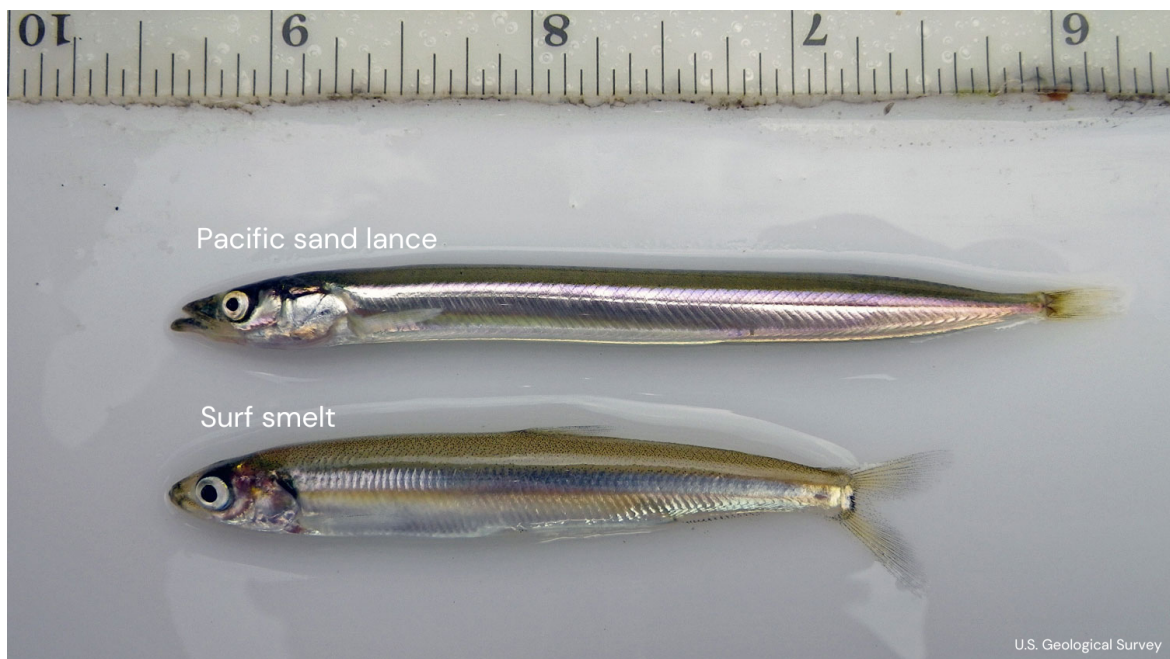


Hey there!

Welcome back to **The Schooler: Issue 4**—your bimonthly PSS newsletter for all things forage fish. Here, we'll provide key updates on recent survey findings and other program news.

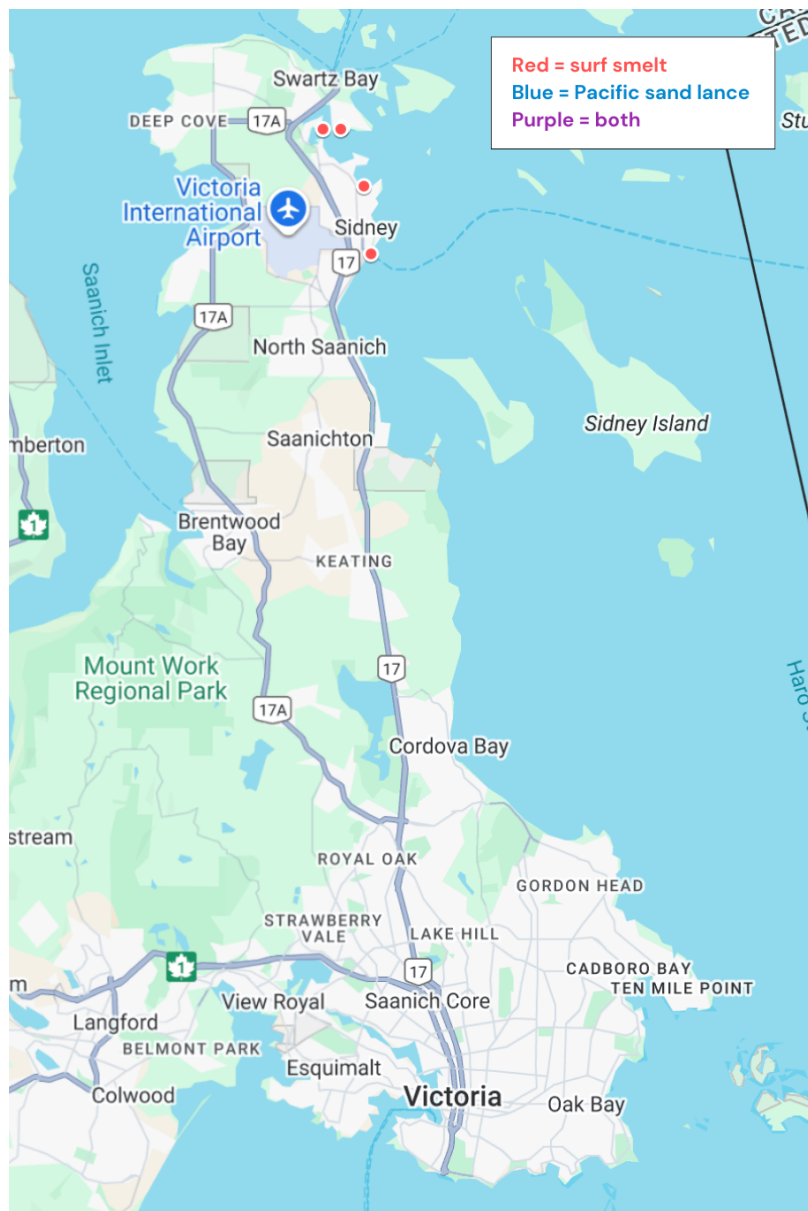
As summer comes to a close, we're starting to plan for our fall and winter forage fish spawning season. Get ready to dust off your kits, charge up your batteries, and put your boots on!

Let's dive in!



Here are the results for surveys completed **since the last edition** in June 2025:

Location	Date	Surf smelt	Pacific sand lance
Boat Ramp (Tulista): Site 2	Mar 31, 2025	2	0
McMicking Point: Site 2	Jun 11, 2025	0	0
McMicking Point: Site 1	Jun 11, 2025	0	0
Resthaven Island Beach: Site 1	Jun 29, 2025	0	0
Sidney North Saanich Yacht Club Beach: Site 2	Jun 30, 2025	1	0
Tryon Beach: Site 2	Jul 13, 2025	74	0
Roberts Bay Beach: Site 5	Jul 14, 2025	2	0
Tulista Park Beach: Site 4	Jul 16, 2025	0	0
Sidney North Saanich Yacht Club Beach: Site 3	Jul 17, 2025	0	0
Sidney North Saanich Yacht Club Beach: Site 2	Jul 17, 2025	0	0
Surfside Beach (Amherst): Site 1	Jul 18, 2025	0	0
Breakwater Beach: Site 1	Jul 20, 2025	0	0
Tryon Beach: Site 1	Jul 22, 2025	77	0
Portage Park Beach: Site 2	Jul 28, 2025	0	0
Tryon Beach: Site 2	Aug 1, 2025	209	0
Sidney North Saanich Yacht Club Beach: Site 2	Aug 4, 2025	0	0
Sidney North Saanich Yacht Club Beach: Site 3	Aug 4, 2025	0	0
Roberts Bay Beach: Site 2	Aug 5, 2025	0	0
Tryon Beach: Site 2	Aug 14, 2025	12	0
Arthur Drive Beach: Site 1	Aug 16, 2025	0	0
Sidney North Saanich Yacht Club Beach: Site 2	Aug 26, 2025	0	0
Seaspan Beach: Site 1	Aug 28, 2025	0	0
Tryon Beach: Site 2	Aug 29, 2025	0	0



That's a total of **23 surveys—7 positive for eggs! 145 volunteer hours** went into these results; a huge thank you to each and every community scientist who contributed their time and hard work.

Highlights:

- Tryon Beach in Sidney continues to be an important year-round regional spawning hotspot for surf smelt, particularly in the summer when the vast majority of other beaches yield no eggs.

Don't see one of your submitted surveys? If it was towards the end of the month, it likely didn't make the cutoff for the issue and will be included in the next. If not, please email chloe.kraemer@peninsulastreams.ca.



The **Beach Bulletin** is a living space for sampling tips & tricks, program updates, volunteer features, and any other tidbits ("beach bites"). This is **open to all volunteers for contribution**; if there's anything you'd like to share with your fellow forage fish community scientists—some sampling/microscoping advice, a survey anecdote, team member feature, or cool wildlife sighting—we warmly encourage you to send it our way at chloe.kraemer@peninsulastreams.ca!

This issue's beach bites:

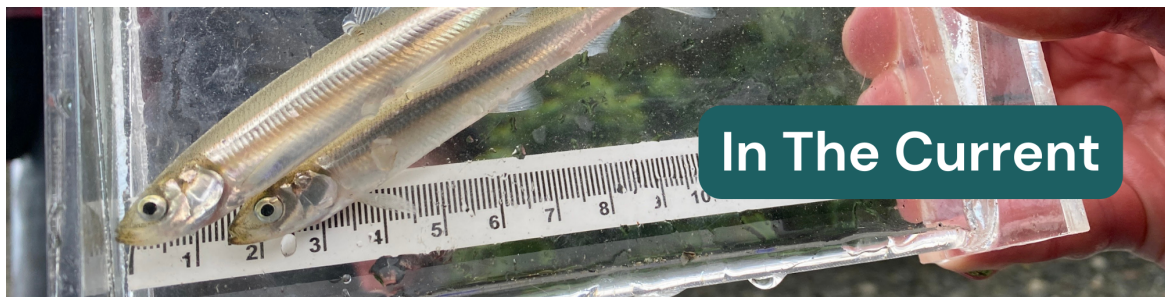
Signage for Forage Fish Spawning Habitats: Over the past few months, we've been working with talented artist [Amanda Key](#) to create a visual design for new signage that will be installed at some of the beaches we've identified as forage fish spawning habitat. This will replace the small green signage you may have noticed at a few beaches around town, and will be paired with more detailed information on forage fish spawning and how to get involved/learn more. Check out the amazing design below and stay tuned for the final signage!



Surf Smelt Blog Post: Keen to brush up on your surf smelt knowledge? Check out the [blog post on our website](#) written by our very own Sidney/North Saanich forage fish team lead volunteer, Sandra Foss!

Gearing Up for the Fall : We're ramping up for our main spawning window (Oct-Apr)! This year, we're hoping to have a more structured and unified sampling effort across our teams. While we're still brainstorming and planning behind the scenes, some of the things you might see include:

- A sampling kick-off social for our volunteers.
- Regular meetings between team leads to coordinate sampling coverage.
- "Blitz" sampling of an area following the detection of eggs at a nearby beach.
- Continued training sessions to recruit new volunteers.
- And more!



Wanting to dive deeper? Wade into this issue's current events and news below:

[The Decline of the Mermaid Creek Salt Marsh:](#) The Mermaid Creek Salt Marsh in Roberts Bay is a red-listed ecosystem in the Shoal Harbour Migratory Bird Sanctuary, rapidly eroding due to shoreline armouring, storm surges, and watershed changes. Recently, a report by West Coast Environmental Law's Michael Bissonette was released, using Mermaid Creek as a case study on the challenges restoration projects face with riparian rights. The report also calls for reforms through a BC Coastal Marine Strategy to better balance property rights with habitat conservation. Check out the [full report](#), as well as a [radio interview](#) by the author on Peninsula Affairs (Radio Sidney), with Peter Wainwright.

[Tracking Delta Smelt in California:](#) Researchers at the U.S. Department of Energy's Pacific Northwest National Laboratory have developed rice-sized tracking tags light enough for tiny fish like the endangered delta smelt, found only in California's Sacramento-San Joaquin Delta. Over the past century, pollution, invasive species, and excessive water pumping have destabilized the ecosystem, pushing the delta smelt toward extinction. Advances in technology now make it possible to follow their movements for weeks at a time, offering an opportunity to answer critical questions about smelt survival and migration. This breakthrough could transform how scientists study and protect small but vital species.

[Effects of Anthropogenic Noise on Pacific Sand Lance:](#) A new study led by researchers from the University of Victoria found that underwater noise from human activities—like boat traffic and pile driving—lowers the energy content of Pacific sand lance. In lab experiments, sand lance exposed to noise had reduced energy density, making them less nutritious for predators such as seabirds. This suggests noise pollution may harm marine ecosystems not only by disturbing animals directly, but also by degrading the quality of their prey. Check out the full summary article from Global Seafood Alliance to learn more.

Thanks so much for tuning in! Catch you in our next issue in October.

Chloe Kraemer

BEACH Program Coordinator

Peninsula Streams & Shorelines

Living and working within Coast and Straits Salish territory, the territories of the Lekwungen peoples, known today as Songhees and Esquimalt Nations, the T'Sou-ke Nation, and the WSANEC peoples, known today as WJOLELP (Tsartlip), BOKECEN (Pauquachin), S'ÁUTW (Tsawout), WSIKEM (Tseycum), and MÁLEXEL (Malahat) Nations.



9860 West Saanich Road, North Saanich BC, V8L 4B2

Want to change how you receive these emails?

You can [unsubscribe from this list](#).